

Dual Cholesteatoma in a Non-operated Ear: A Rare Presentation

W. K. Smith¹ and H. K. Subrahmanyam^{1*}

¹Department of ENT, Kettering General Hospital NHS Foundation Trust, Kettering, UK.

Authors' contributions

This work was carried out in collaboration between both authors. Authors WKS and HKS designed the study, performed the statistical analysis, wrote the protocol and wrote the first draft of the manuscript. Author WKS managed the analyses of the study. Author HKS managed the literature searches. Both authors read and approved the final manuscript.

Article Information

Editor(s):

(1) Dr. Karthik Yadav Janga, Bayer Healthcare, USA.

Reviewers:

(1) Ibrahim El-Zraigat, The University of Jordan, Jordan.

(2) Nishi Sonkhya, SMS Medical College and Hospital, India.

Complete Peer review History: <http://www.sdiarticle4.com/review-history/56483>

Case Study

Received 18 February 2020

Accepted 25 April 2020

Published 01 May 2020

ABSTRACT

Objective: We report an interesting case where two cholesteatomas were found simultaneously in a non-operated ear. The presentation, management and implications for other patients with cholesteatoma are discussed.

Case Report: A 49-year-old male with a unilateral mixed hearing loss was found to have two cholesteatomas. Only one was suspected clinically, in the anterior attic, the other a large congenital cholesteatoma in the mastoid tip as an incidental finding on non echo-planar diffusion weighted image (Non-EPI DWI) MRI scan. The radiological findings were confirmed at surgery (combined approach tympanoplasty).

Conclusion: Congenital cholesteatoma in the mastoid process is extremely rare and multiple cholesteatomas occurring simultaneously in a non-operated ear is also rare. Non-EPI DWI MRI is increasingly used as a non-invasive technique for detecting recurrent or residual cholesteatomas post-operatively. This case supports extending the role of non-EPI DWI MRI scanning pre-operatively in primary disease to exclude additional cholesteatomas and to assess the suitability of permeal endoscopic surgery.

*Corresponding author: E-mail: hks175@yahoo.co.uk;

Keywords: Cholesteatoma; DWI Non-EPI MRI temporal bones; Endoscopic Ear Surgery (ESS).

1. INTRODUCTION

Cholesteatomas are non-cancerous lesions which can occur in the middle ear, mastoid [1] and the external auditory canal (EAC). Cholesteatomas are classified as being congenital or acquired. Histology confirms them as well-defined necrotic masses of squamous epithelium with considerable keratinisation [2]. Cholesteatoma is an uncommon condition and epidemiological evidence [3] suggests an incidence rate of 9.2 per 100,000 population per year in Northern Europe. Congenital cholesteatoma accounts for 2-5% of all cholesteatomas [4]; the most common site is in the middle ear, the rarest site being in the mastoid process, comprising only 3-4% of congenital cholesteatomas [5]. Multiple foci of cholesteatoma are identified in previously operated ears but the presence of multiple cholesteatomas in non-operated ears is rare.

sounds but had developed coping strategies. There was no history of otalgia, discharge, tinnitus and vertigo or loud noise exposure was recorded. The patient had Asperger's Syndrome and was on sodium valproate for a Bi-Polar disorder. On examination the right ear was normal but left ear revealed an anterior attic retraction pocket with possible cholesteatoma. No discharge or facial palsy was present.

Audiometry was normal in the right ear but the left ear had a mixed hearing loss with bone conduction of 5-35dB and air conduction of 30-65dB. Tympanometry was normal.

2. CASE REPORT

A 49-year-old South-Asian male presented with history of a hearing loss which was discovered during a screening hearing test at his opticians. He had been struggling with conversations with background noise as well as localisation of

MRI scan of the internal auditory meatus and cerebellopontine angle was arranged to exclude a vestibular schwannoma as a cause of the asymmetrical hearing loss and was normal. In view of the anterior attic abnormality, a non-EPI DWI MRI of the temporal bones (Fig. 2) was requested which confirmed an anterior attic cholesteatoma. However the scan also demonstrated a large cholesteatoma in the mastoid tip. The subsequent CT scan of the Temporal bones (Fig. 3) showed areas of soft tissue opacification within the anterior attic and a separate focus in the mastoid tip on the left side corresponding to the areas of restricted diffusion on the MRI scan.

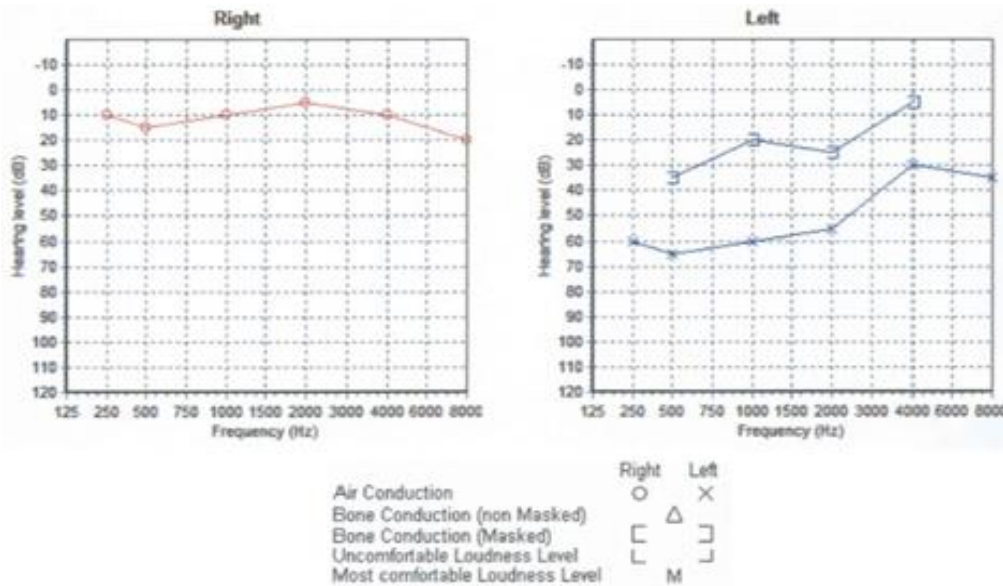


Fig. 1. Pre-operative audiogram

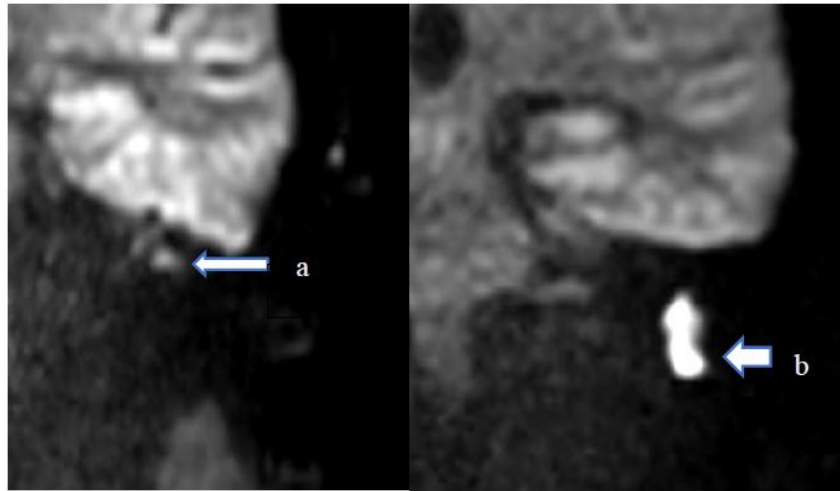


Fig. 2. Non-EPI DWI MRI scan of the temporal bones showing the presence of two cholesteatomas (a-attic and b-mastoid tip) on the left side

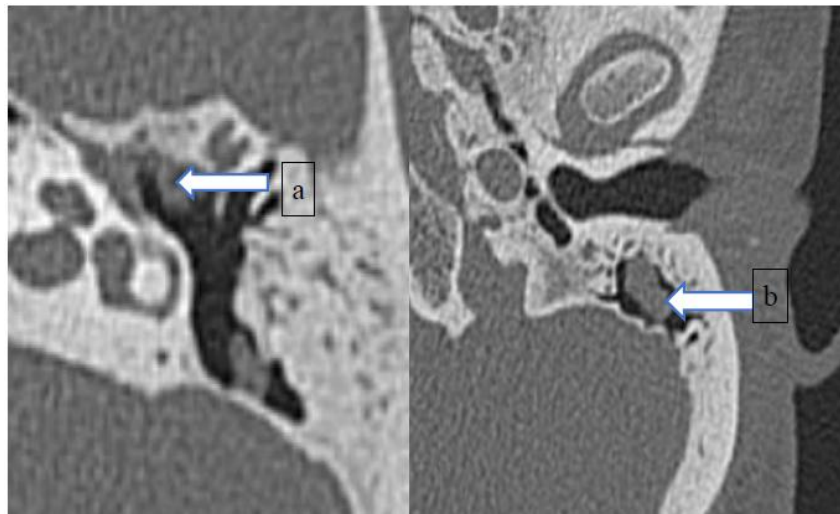


Fig. 3. CT Scan with left sided areas of opacification (a-attic and b-mastoid tip)

The patient made a good recovery from surgery (Combined Approach Tympanoplasty) where the radiological findings were confirmed reconfirmed. Post op follow up 2 month audiogram demonstrated improvement in the conductive element of the hearing with closure of the air-bone gap.

3. DISCUSSION

Congenital cholesteatoma of mastoid origin has been described in a few case reports in the literature with some patients having symptoms of otalgia, retroauricular swelling, dizziness and narrowing of the ear canal. Warren et al. [6] described 9 cases of congenital cholesteatoma in

the mastoid temporal bone and the most common presentation was, as in our case, an incidental finding on radiological examination.

The presence of a second site cholesteatoma in a non-operated ear is rare. Non-EPI DWI MRI has revolutionised the post-operative follow-up [7] and is now the imaging modality of choice in the detection and localisation of recurrent and residual cholesteatomas by providing a non-invasive alternative to surgery. The diffusion-weighted technique is very specific due to the characteristically high keratin content of cholesteatomas [8]. These show up as areas of high signal intensity whereas other structures generate lower signals. The non echo-planar

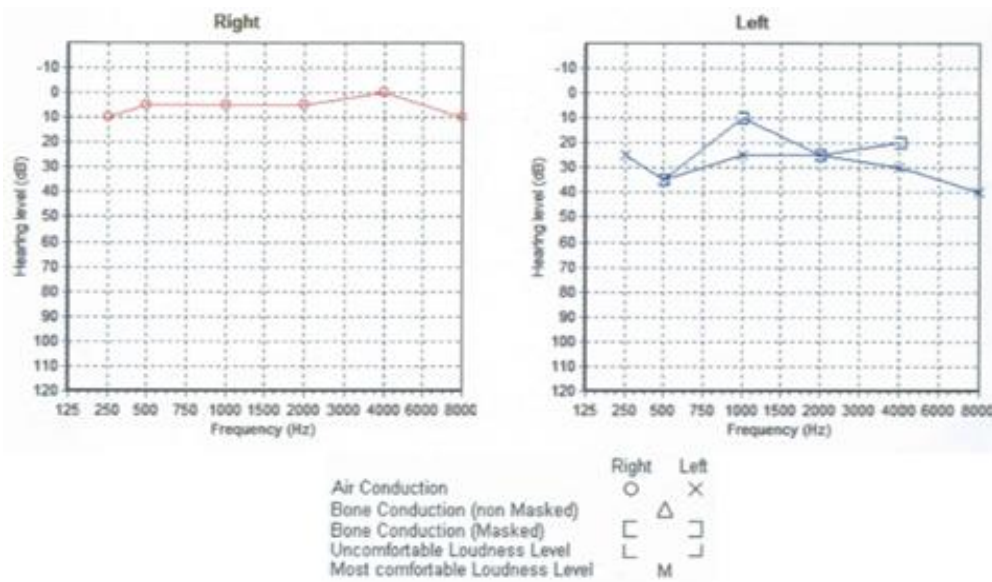


Fig. 4. Post-operative audiogram

sequences increase sensitivity by generating imaging slices as thin as 2 mm and therefore, they can detect cholesteatomas just as small¹². Subsequently, when used in conjunction they form a powerful tool for assessing disease post-operatively. It is favored over CT scanning for its specificity and ability to avoid excessive radiation exposure. High resolution CT scanning can provide valuable information on the anatomy of the temporal bone but it is poor at differentiating a cholesteatoma from inflamed and granulomatous tissue, depicting both as non-specific areas of opacification [9].

Patients having a large modified radical mastoidectomy (MRM) or combined approach tympanoplasty (CAT) where the mastoid cavity is fully explored are less likely to have a second cholesteatoma left undetected. In recent years the gaining popularity of endoscopic ear surgery (EES) to remove cholesteatoma limited to the middle ear and mastoid (anterior to the posterior limit of lateral semicircular canal) may necessitate the use of Non EPI DWI MRI scanning prior to primary surgery.

There is however, less literature available on the use of non-EPI DWI MRI scanning pre-operatively to accurately diagnose the primary disease. In our case, it was fortuitous that this sequence was requested at the same time as the MRI scan to investigate the asymmetric hearing loss, otherwise the cholesteatoma in the mastoid tip would have been missed if a limited

endoscopic removal of the attic cholesteatoma was performed.

A meta-analysis published in 2013 [10] reviewed 10 studies (total of 342 patients) and concluded that non-EPI DWI MRI is an extremely accurate technique to correctly identify the presence of cholesteatoma with sensitivity of 0.94 (confidence intervals of 0.8-0.98) and specificity of 0.94 (confidence intervals of 0.85-0.98). This shows that the use of this technique in primary pre-operative cases is justified when a diagnosis of cholesteatoma is in question.

Many other studies show a strong correlation between the presence, extent and location on pre-operative scanning (using non-EPI DW imaging) and the findings at surgery [9]. This confirms that it can accurately predict the disease in primary cases and help to plan an endoscopic approach for surgery. Prior to surgery non-EPI DWI Scans positively identified cholesteatoma in 27 patients with the primary disease and in 23 patients with residual or recurrent disease. The results were 98% precise in portraying the localisation and extension of disease (49/50 cases) with the sole exception being an overestimation of disease number in a patient who had previous surgery for cholesteatoma. These were deemed crucial factors in influencing what surgical approach to use. It was found that an endoscopic transcanal technique was better suited for lesions smaller than 8 mm and just located in the middle ear or

its extensions. An endoscope-assisted retroauricular mastoidectomy was the technique of choice for bigger lesions.

4. CONCLUSION

Multiple site cholesteatomas occurring simultaneously in a non-operated ear has rarely been reported in the literature. Non-EPI DWI MRI scans are established as a means to detect cholesteatoma post operatively but with the evolving field of Endoscopic Ear Surgery (EES) there has been a paradigm shift towards using Non-EPI DWI MRI scans in addition to CT scans of the temporal bones in the preoperative management of cholesteatoma.

CONSENT

As per international standard or university standard, patient's written consent has been collected and preserved by the author(s).

ETHICAL APPROVAL

As per international standard or university standard written ethical approval has been collected and preserved by the author(s).

ACKNOWLEDGEMENTS

We thank Liu P for helping in the initial draft of the paper and Dr Leena Naidu, Consultant Radiologist for her expert opinion with reporting of the scans.

COMPETING INTERESTS

Authors have declared that no competing interests exist.

REFERENCES

1. Sood N, Khandelia BK, Bugnait G. A case report of a giant cholesteatoma. *J Clin Diagn Res.* 2017;11(3):ED08–ED10.
2. Bhutta MF, Williamson IG, Sudhoff HH. Cholesteatoma. *BMJ.* 2011;342:d1088.
3. Kemppainen HO, Puhakka HJ, Laippala PJ, Sipilä MM, Manninen MP, Karma PH. Epidemiology and aetiology of middle ear cholesteatoma. *Acta Otolaryngol.* 1999; 119(5):568-72.
4. Paparella MM, Rybak L. Congenital cholesteatoma. *Otolaryngol Clin North Am.* 1978;11(1):113-20.
5. Bennett M, Warren F, Jackson GC, Kaylie D. Congenital cholesteatoma: Theories, facts, and 53 patients. *Otolaryngol Clin North Am.* 2006;39(6):1081-94.
6. Warren FM, Bennett ML, Wiggins RH 3rd, Saltzman KL, Blevins KS, Shelton C, et al. Congenital cholesteatoma of the mastoid temporal bone. *Laryngoscope.* 2007;117(8):1389-94.
7. Jindal M, Riskalla A, Jiang D, Connor S, O'Connor AF. A systematic review of diffusion-weighted magnetic resonance imaging in the assessment of postoperative cholesteatoma. *Otol Neurotol.* 2011;32(8):1243-9.
8. Más-Estellés F, Mateos-Fernández M, Carrascosa-Bisquert B, Facal F, Puchades-Román I, Morera-Pérez C. Contemporary non-echo-planar diffusion-weighted imaging of middle ear cholesteatomas. *Radiographics.* 2012;32(4):1197-213.
9. Migirov L, Wolf M, Greenberg G, Eyal A. Non-EPI DW MRI in planning the surgical approach to primary and recurrent cholesteatoma. *Otol Neurotol.* 2014;35(1): 121-5.
10. Li PM, Linos E, Gurgel RK, Fischbein NJ, Blevins NH. Evaluating the utility of non-echo-planar diffusion-weighted imaging in the preoperative evaluation of cholesteatoma: A meta-analysis. *Laryngoscope.* 2013;123(5):1247-50.

© 2020 Smith and Subrahmanyam; This is an Open Access article distributed under the terms of the Creative Commons Attribution License (<http://creativecommons.org/licenses/by/4.0>), which permits unrestricted use, distribution, and reproduction in any medium, provided the original work is properly cited.

Peer-review history:

The peer review history for this paper can be accessed here:
<http://www.sdiarticle4.com/review-history/56483>