

Advances in Research
2(6): 354-366, 2014, Article no. AIR.2014.6.005

SCIECEDOMAIN *international*
www.sciencedomain.org



Nuclear Power Project Management Confidence with Cultural Science Thailand

Dejsingchai Wongkhamton^{1*}

¹Faculty of Cultural Science, Mahasarakham University, Thailand.

Author's contribution

This whole work was carried out by the author DW.

Original Research Article

Received 11th February 2014
Accepted 4th April 2014
Published 21st April 2014

ABSTRACT

More than 7 billion people live on Earth which involves a multidimensional activity encompassing environmental pollution, energy and climate. Energy therefore is an important part of life and is an indicator of the direction in developing countries. So the future direction of the energy in Thailand and neighboring countries in Asia were considered. More demands for every day to support all activities, implementation of cultural organization that integrated approach combining both social and technology. Currently, humans find petroleum source to expedite economy and socials, all natural energy has limited by raw material quantity and innovation technology for improve which cannot process full capacity. Issues for nuclear power plant in aspects of society cross to base on cultural implementation of development and change with perceptions towards production pursuance to align in Thailand. Research findings include one of the major factors which affect the nuclear power plant construction in Thailand is that the education level of the people. The citizens basically do not understand the relevance of advanced technology and innovation leading to human convenience and the presence of knowledge on safety and security.

Keywords: Nuclear power plant; economic; technology; culture; society; happiness; healthy; quality; education.

*Corresponding author: E-mail: Dajsingchai.w@irpc.co.th;

1. INTRODUCTION

The world has inevitably developed into modern globalization with high communication, aim to subsidize all city and the next generation towards develop has revolution as the main concept. It would be a benchmarking to cities and the splitting duty between groups such as G7 groups, Euro group, etc. Therefore all others instruments are necessary to support life's comfort and convenience wherein electrical energy is used to activities and drive all activities [1]. Scientist and Engineers try to find new fuel through the theory of Madame Marie Curie and Albert Einstein regarding uranium mineral and fuel energy [2]. According to research, the economic status of several countries has developed within the period of 1850 to present. The world's energy consumption has increased four times within the period of 1982- 1990, equivalent to 24 percentages and to be increase up to 50 – 70 of total global capacity by 2020 [3]. All of Countries is struggling with its new energy policy and its may be countries are considering nuclear power implementation, due to the fact that policy based on renewables development only failed. Effort of the country to cope up with ever increasing energy consumption, The country is heading towards industrial development whereas energy is considered as one of the contributing factors to make industrial and economic progress [4]. Government should create a foundation for domestic and foreign sectors that will encourage them to invest in Thailand. The demand energy is increasing and there are options to be considered like finding ways to find new sources of energy and to anticipate mass volume of consumption in the future. Oil, coal and renewable energy will contribute much; Consider alternatives to generate electricity which is based on industry and the other option in which electricity is produced from dam at the lowest cost, whereas the government's policy is to build a dam so often [5]. In lieu to this, conservation groups highly disapproved the project to be extended out or there must be a need for the government to generate electricity using coal or oil. But it will manifest high cost on production and the risk of instability on energy. Coal and oil will be both purchased from a foreign country. Although coal is considered as the topmost for the past decade, it has been estimated that in the next decade, the power of the country will have to face three options that are probably not considered for now to import coal, the nuclear technology, or both coal and nuclear technology such as wind power to generate electricity from water, energy from the sun, energy from fossil fuels of geothermal energy, energy from ocean waves, etc. Electrical power is a basic factor to support economic development [6].

Demand for electricity is rapidly increasing every year, energy source for power is not easy, it takes time to prepare a long-lasting quality and require high investment, then it may have implications in various fields, the use of energy resources must be thoroughly handled [7]. Thailand's population growth followed a diminishing rate, it is expected that the total population will increase from 63.4 million in 2008 to more than 70 million on 2028. Thailand's demographic structure is changing with the emergence of an aging society and will increase, thus one half of the total population will reside in urban areas in the next 50 years [8]. Thailand had problems associated with social issues, resource utilization and environmental concern but it changed its vision and gave emphasize on the population as center of development. Electricity plays an important role in people, transfer of technology and economic progress. Technology has become an important driver for trade competition and the export of goods in international trade. The people in the society who borrowed culture to use then ought to be offensive and prejudice. The new culture is not always positive; it can be both positive and negative. The new culture causes acceptance of cultural change. This is because new innovations are spread, from the old over the others that are needed by the society. Particularly the social and economic development, efforts are needed to bring new technologies which often leads to rapid cultural development [9]. For example, Thailand's

economic and social change about 30-40 years later, like the changing role of women in Africa, American in the United States, and Japan as well [10]. For the development of social and cultural aspects right then, the new culture must blend or match the structure of the original culture. However, the changes may result from the intentional culture of social imperialism and colonialism and from any of the major powers in the past 16th, 17th and 18th, which is in a sociological process. History and political science have been studied by an anthropologist who is interested in the change of culture or behavior, in the case of a phenomenon that occurs naturally, or even a change of culture that occurs later due to political factors. That is, when people from two different cultures have the same confederation [11]

The political ideology or the cause that anthropologists want to know is the phenomenon of political experience and share life with each other to form a society with much different cultural compared to others which have adapt culture from the outside. The as iceberg theory, these problem had been hide under water so it will be rise into broken information and share to people via all channel of communication both central government and local community [12]. As per reason the people's concern with the industrial concept did not response and respect the population in areas in which the construction of the plant will have. Thailand includes nuclear power in its Power Development Plan from 2026. While these plans could face public opposition, the country has very limited indigenous energy resources, which is expected to be a key driver behind its development. We project Thailand to start producing electricity from nuclear power plants before 2030 [13,14].

2. AVAILABILITY OF FUELS FOR THAILAND

Whenever there is a need of social support for the growing public utility basic systems, are useful like, etc. It includes a source of energy that can be used to replace fossil fuel energy without affecting the others; examples of alternative are Biogas, Biomass, Hydrogen, etc. However, the alternative kind of nuclear power which has uranium plus and fission effects have expansion to power so it has classify the pros and cons then that are attached in Power Develop Plan on 2007of Thailand. Preservation and reservation of fuel are needed especially when fossil fuel is lost in the world [15]. The alternative energy development in Thailand has a national use of nuclear energy to generate electricity. Development of nuclear energy has been studied for over 40 years, nuclear power plants are used only in the first stage of the developing and growing industrial countries. This is because energy demand in the economy and infrastructure to improve the quality of life is an important part in the choice of nuclear energy as well as the electricity production. The cost of fuel is low has high-yield energy. Nuclear energy is an important factor in developing countries to progress. There is a very little chance for a nuclear power plant to rise. Nuclear power is suitable to be used for producing electricity infrastructure. And the use of alternative fuels such as coal, oil and natural gas is very essential. This saves precious natural resources that are limited to the use of other benefits which are essential to life and developing countries. This is for replace it. In the process of power generation, heat energy from nuclear reactors is used. The importance of the history of nuclear power plants in the country and abroad has gathered in a systematic and continuous manner. This problem is to focus on energy conservation. In all sectors, the proportion rate of energy consumption in residential areas is 25 percentage of total electricity consumption in the country [16].

Another option is to accelerate the use of a renewable energy like solar energy which high availability. The country's weather is hot throughout the year, the solar power is clean and does not have any impact with the environment, protects the environment perhaps but

what about storage of solar energy and use during the night it concern still batteries are not effective enough. This reaction creates heat, which is used as a heat source that turns water into steam, which drives a turbine, which then spins a generator to produce electricity. The construction of nuclear power plants shall set important step in the approval of the construction. However, during the initial stages of building the power plants, a lot of reactions and protests from the public were gained, and the association of environmental whom does not have clear information about patter and effects which are apprehensive and may sometimes lead to violence as well [17]. Meanwhile, there are many nuclear power plants worldwide and they generate high amounts of nuclear support the power. Nuclear energy provides cheap electricity due to the fact that it is highly subsidized as same as renewables energy. However the governments have to give warranties, this enables the national industry where nuclear energy is produced to successfully compete with other international companies producing the same product for higher prices due to high energy and electricity costs.

At the moment, reactors pose a threat to human health, security, international peace, and have negative impacts on the environment. Notwithstanding the electric power from the nuclear energy which have cheap price electricity due to the fact that it is highly subsidized and the use fuels for process about 20 tons per 1000 MW per year. Therefore, nuclear reactors pose a threat to human health, security, international peace, and have negative impacts on the environment and it meter with fear to the nuclear explode which distribution radiation to atmosphere. However, the risk of a nuclear accident or a terrorist attack on one or more of these nuclear installations, the difficulties and high costs of management of nuclear waste generated by these reactors and the fear that the nuclear waste might be used for making nuclear weapons are issues of concern [18]. Whether nuclear energy is among the best solutions for sustainable economic growth and whether it brings peace to the countries or region where it is produced is highly disputable. Whether nuclear energy is among the best solutions for sustainable economic growth and whether it brings peace to the countries or region where it is produced is highly disputable. While, there are many nuclear power plants worldwide and they generate high amounts of nuclear waste. This nuclear waste is a problem by itself and its impacts might threaten the peace of future generation. Thinking about future generation can not only done by closing down the nuclear power plants, but also by thinking on best ways to manage the current and future nuclear waste after closing down and decommissioning of the current nuclear power plants. This paper has also argued that we have a great responsibility for the future generation and the sustainable peace. That's why we must think carefully before deciding whether to vote for or against the building of new nuclear power plants. What we should do is to promote energy production from renewable sources, to minimize the gap between the rich and the poor through development projects, to analyze the reasons behind terrorism and try to eliminate these reasons. Only then, peace for us and for the future generations can be achieved [19].

3. FEASIBILITY OF NUCLEAR POWER PLANT IN THAILAND

Use of nuclear technology to promote agricultural activities will eventually improve the productivity level and quality of the products spread out into more rural areas. The aspect of nuclear energy related to the environment and the development in the treatment of the environment as well greatly affect the other and the protection system which controls and monitors the amount of radiation that exist in nature and have a safe level for human beings and all other living things in general provided by the environmental benefits of nuclear energy [20]. However, the Education and Research for nuclear energy that nuclear reactions through the use of high energy particles or radiation processed the nucleus, both basic and

advanced researches state the nuclear energy application, the benefits of nuclear energy to mankind, as well as the transmission of nuclear technology. And thoroughly relative to the development of people with the basic knowledge then will lead to the economic growth of Thailand in the near future. Nuclear technology as mechanism is one factor that will enhance industrial development in terms of agriculture, energy, environmental and resource management; these will unite the hardships in the future generation [21]. Energy is known to be a necessity to people's lives. Globally, it is used for heating, cooking, in transportation, commercial, agriculture, and industry. Industrialized nations have particularly large energy demand and developing countries' energy consumption typically increased. However, their growing economies and the nations worldwide have supplies and used electric power and other equipment to acquire convenience, through support from whichever and whoever has plenty of fossil fuel reserves, until such may run out of stocks too, whereas human tried discovering new energy source to compensate that energy [22].

Thailand has a population of 64,871,000 (2015) and population growth is 1 percentage, Thailand area is 513,000 square kilometers. Main Industries, Agriculture- Industry, Service Industry, Computer Parts, Textiles, Automobiles, etc., Climate Tropical Climate, Thai economic update and outlook 2014 will be GDP to grow 3.0%, [23] Hence, the nuclear energy and the renewable energy resources will continue to contribute to the combined energy, which used minor and smaller sale and cost less than the fossil fuels. Generally the methodology process the petroleum to all product such upstream and downstream, its concern to energy effecting with industrials and power plant sector due to every activities of there will be discharge all waste and scrap of particle will contaminated to water source the Public, [24] significant, Thai's living near that area stay in locals whom are fearing and need to information for used monitoring the power plant project which will be construction in Thailand in future wherein uranium fuel will be used to process electric energy, without considering the different perceptions towards "the nuclear" [25] innovation, Humankind tries to develop tools in demand support and reduce space between industries and the community, resulting to equilibrium of society and culture which maintains healthy environment, [26] also people's in the locality gain knowledge and training leading them to achieve five (5) potential directions such as economic, social, environmental, legal, and technological aspects [27]. There are reflections of cultural change with the history of communities formed in each district as well as with the cultural state from which it is mixed with culture. After the result of commingle then, the unity that comes from diversity and the resolution of specify unit choose implement to changes [28].

All elements have been changed. Human needs are endless and very demanding but changes may occur fast or slow depending upon several factors such as the education level of the people within the locality. Transport and communications, creativity proposed changes, and culture and society as a pair must always go hand in hand. Changes in the social and cultural aspects are relative. Factors such as the discovery of the invention are known as social change, creating results in the entire system. Socials are patterns and way of life, both material and non-material which are inmost as opposed elements to tangibles of lives [29] three elementary scenarios of Culture Theory such a) Technology system which means the combined source of natural and equipment tools and others created by human; b) Society system which means collection of social organization and human character; c) Ideology system which includes knowledge, beliefs, attitudes and values. The technology system is lower (Infrastructure) and the basis of culture as well due to human's life which is dependent on this system in order to adapt to the environment [30]. The social organization and structural system are known as the superstructure of culture. The relationship between the environment and production technology is very important because

it causes changes. Therefore, the culture along with technologies really affects human behavior. Basic model which are Culture, Healthy, Social, Quality, etc., its concerned with the project management while creating project which shall be used as model proceeding with the policy and public scope, it helpfully clarify all questions problems and confusions with the project, then people within the area or the society [31]. This model shall compromise and reduce problem regarding the obstruction or hindrances in the pursuance of said project. However, the communication and knowledge sharing could serve as link chain from time to time. Benchmarking has based idea to create knowledge and learn the pros and cons of the power plant construction project. At present, Thailand aims to develop the people in terms of Corporate Social Responsibility which is also referred to as "best practice benchmarking" or "process benchmarking" [32]. Important theories which are set as conceptual guidelines leading towards the best path for the consummate should be miss requirements electric power to next generation;

Project Management had significantly results; the discussion on the relationship between project management and Cultural Science advantage illustrates that affect penetrate and stimulate all areas of concerning activity to culture, healthy, social, quality which are structure, corporate, conditions and life styles, methods of coordinating activities and deploying to functional and resource, flexibility to adaptability which observed in the functional, competence, structural, cultural distributional and motivational dimension. Extensive disparities are helpful finding methodological triggers creativity to successful management,

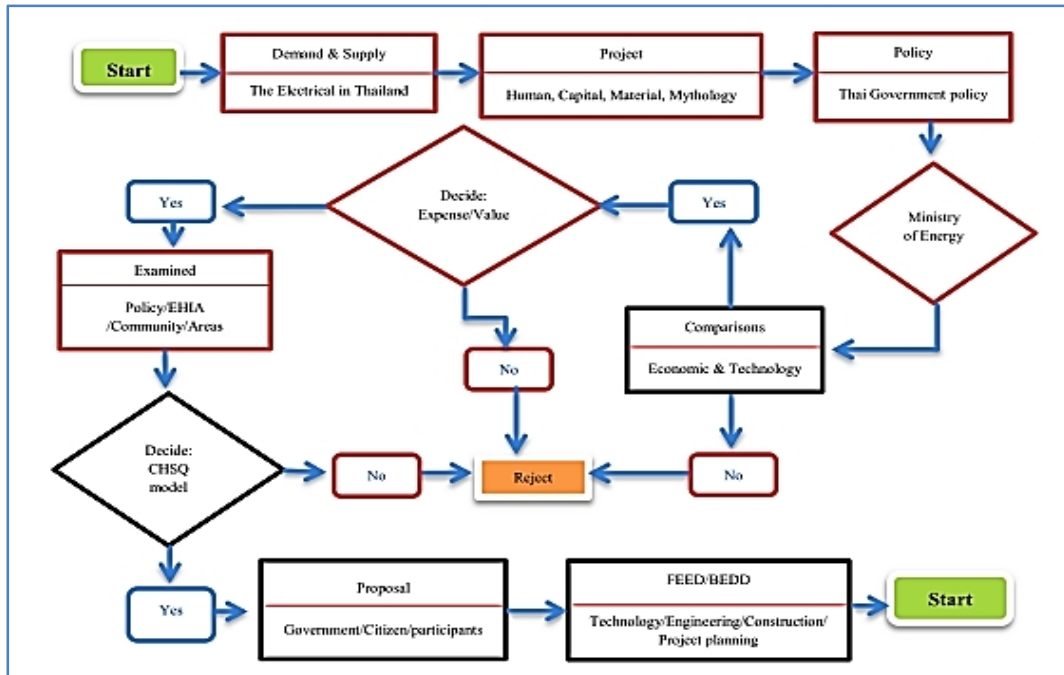


Fig. 1. Guidelines leading towards CHSQ shall helpful compromise with Power Develop Plan Project

Nuclear power is used to protect the greenhouse conditions affected by acid rain that is also harmful to all living things in the world. It does not cause global temperature to rise like the

usage of other fuels [33]. It is comparative with hydroelectric power plant. The benefits of nuclear mix energy for industry affairs which make use of radioactive materials and radiation in the nuclear industry and that technique is referred to as the usage of atomic energy. In health and hygiene – nuclear medicine is manifested through the use of chemicals or radiation for treatment and aids in the discovery and diagnosis of body organs. It is like to alleviate the suffering of patients and shorten the duration in the hospital through the use of radioactive substances, medication, and radiation [34]. Thus, energy classification for production and supplies for power plant should be processed systematically considering the welfare of every citizen especially those living within the vicinity of the construction area that is concerned with the power of fission bomb and uranium that possess radioactive affecting people's lives. The problem with the construction of nuclear power plant in Thailand, [35] people failed to be open-minded regarding innovation and acknowledgement of technological change and new sciences as well which contains access to competency of participants on social aspect. Wrong vision of the reality synthesized and lack of human information are very hazardous to the pursuit of the project. It cannot be presented to the public [36]. Management sectors are prone to responsibility and transparency routing cause for stratagem which is very important.

Importance of energy to people's lives is likely related to the energy brought by the sunlight.. This form of energy is designed for plants' photosynthesis. Aside from supply chain of plants, humans and animals also need sunlight for survival. The sun's energy is also stored in coal, wood and oil which aid in food production and modify matter. It has been estimated that the amount of energy falling on Earth's surface annually is equal to the energy of 250 tons of coal. Energy is known to exist in a of different forms; among these are heats, light, chemical, electrical, sound, mechanical, and nuclear [37]. Generally, energy easily from one form to another, the steam driven turbine generator of power plant is designed to convert heat energy into electrical energy. The heating system of a building operates by converting the chemical energy of gas or fuel into a usable form of heat. Electrical energy may also be converted into light, heat or mechanical energy through the use of different equipment [38]. The capacity of energy to work on things will make these possible. In life, energy coordinates with all other living things and with the environment as well. Going back to the time where homogenize Sapiens existed, the usage of power from all types of fuels has actually provided protection to people's lives, from that time on until the present generation of mankind.

In October 2012, the Thailand has used petroleum about 6,098 tons. Increased range of the same year amounted to 6.6 percent. Thailand has preparation energy source reserve to proceeding electricity for expedited economic growth on 2017, reference to PDP 2010-2030 will have prediction intently of Thailand [39]. In 2026, Thailand has plan layout for city and industrials will be expansion in future but that don't interaction between employee of government and people's on province it will have plan construction the power plant and industrial upstream\ downstream for feedstock [40]. In power plan development 2026-2027, EGATE Nuclear power plant #1,2 capacity: 2000 MW for useful connect grid system capacity during that can be classified by power plant [41].

Table 1 EGATE Nuclear power plant #1,2; Summary of Thailand Power Development Plan 2012-2030 (PDP 2012-2030 Revision 3, the added capacity during 2012 – 2030 of 55,130 MW can be classified by power plant types as the following:

Table 1. Thailand Power Development Plan 2012-2030 PDP2010: Revision 3

Item	Description	Capacity (MW)	Year	Fuel type
1	Renewable energy power plant	14,580		
	- Power purchase from domestic	9,481		
	- Power purchase from neighboring countries	5,099		
2	Cogeneration	6,476		
3	Combined cycle power plants	25,451		
4	Thermal power plants	8,623		
	- Coal-fired power plants	4,400		
	- Nuclear power plant	2,000	2026-2027	Uranium
	- Gas turbine power plant	750		
	- Power purchase from neighboring countries	1,473		
Total Added Capacity		55,130		

PDP predicting in 2013, the expected electric energy demand increased, while the demand for electricity in the industrial sector, and if not to increase the risk of fuel power generation. It may be require the use of expensive electricity and energy security risks. Regards to the energy power and stability of the region is due to the structure of Thailand that enough electric power process to meet the needs of countries in the country, as well as foreign investment. However, there are concerns about the long-term energy subsidize and the balance of power whenever Thailand opening with to join ASEAM Economic Community because of the risks associated with the fuel to produce electricity to import natural gas from neighbored including an understanding of the public the opposition to the power plant. This may be undermining economic growth with management electric power plan. However, the overall demand for electricity continues to grow. Especially in the industrial sector in 2012 have to peak at 26,121 megawatts gain 9.3 percent from a year earlier. The demand for electricity in the next year (2013) will increase to 26,590 megawatts, or about 3.51 percent by the year 2030 in Thailand is expected to reach 53,000 MW of electricity [42].

4. DISCUSSION

The research aims to find solutions for advanced support and coordination between the local people and the government concerning the energy selection to expedite the electrical sources so as to cope up with the demand and supply in Thailand. Security context or protection system should be considered which includes both social and cultural directions improving the quality of life and attainment of satisfaction in full balance. Sometimes it is difficult to understand someone from another culture because we have not taken the time to listen to what they believe, and because we assume that they should believe what we believe. Learning about other cultures helps us live together and respect each other's ways of life, without misunderstanding or hurting each other. The cultural effect is very significant, this aspect is consistent with Thai culture, interpersonal relationship in terms of culture greatly aid in the reduction of impacts in Thailand.

The research have found key success about problem of all elements have been changed. Human needs are endless and very demanding but changes occur fast or slow depending upon several factors such as the education level of the people within the locality.

Transport and communications, creativity proposed changes and culture and society as a pair must always go hand in hand. Changes in the social and cultural aspects are relative. Factors such as the discovery of the invention are known as social change, creating results in the entire system. Socials are patterns and way of life, both material and non-material which are inmost as opposed elements to tangibles of lives [43]. Due to the difference of how nuclear power has developed and the effects of the involvement of environmental organizations, such as non-governmental organizations (NGOs) and political coalitions, seven blocking mechanisms for diffusion of PV in Japan, ranging from the lack of clear targets and someone responsible for them, the fact that nuclear power often is seen as a contrast to renewable, were identified. Based on these, five policy issues were suggested, including official targets for PV diffusion and a long-term financial incentive for PV users. Positive aspects of nuclear energy are considered in promoting sustainable economic growth [44]. Energy, though fundamentally a physical variable, penetrates significantly into almost all facets of the societal aspects of the developed world (Rosa, 1988). Life-styles, broad patterns of communication and interaction, collective activities and key features of social structure and change are conditioned by the availability of energy, the technical means for converting energy into usable forms and the way energy is ultimately used [45]. Energy is the means for accomplishing work. If some societies achieved greater material outputs than others, it would seem that energy is largely responsible for the material differences between societies.

The process of societal advance in industrial development and the differences in stages of advancement among societies could be accounted for the energy i.e. The more energy consumed, the greater the advancement [46]. Since energy is essential to economic growth and since economic growth represents improvements in societal well-being at least in material wise, this means that energy growth is essential to societal wellbeing [47]. However, the culture is signal warns that the economic sustainable economic growth' might prove to be yet another form of cultural violence and reflect solution. The opportunities for construction, socio-cultural impacts (in 2011); the case study of the earthquake which results to Tsunami along the coast of Japan, looking upon the damages brought by the disaster and the explosion of the nuclear power plant. The opportunity to study that the crisis presented should be taken as a great lesson to learn, that earlier before, concerned sectors did not test the whole system politically, economically, the social structures of the people including international cooperation or assistance; Study the history of construction and the impact of nuclear power plants in other parts of the world, to capture and store a database of the development of nuclear energy, the growth and continuous improvement of the staff, the people in the whole country and the international community as well, the society, culture and technology which varies all the time and use as database for decision-making in all developing countries [48]. Culture and society as a pair must always go together. Social change and cultural change are related. The factors which caused changes are discovered through inventions, the social change results to a system of social patterns and way of life, both material and non-material changes then. Socialization and social control is the mechanism as well as the social system is in equilibrium [49].

5. CONCLUSION

Research findings include one of the major factors which affect the nuclear power plant construction in Thailand is the level of the people. They basically do not understand the relevance of advanced technology and innovation leading to human convenience, and the presence of knowledge on safety and security. Nuclear power project should consider the welfare of the community, and that coordination with the government is a must, data

or information must be relayed. That trust is given to local people, inspired by trust and confidence with the social and cultural aspect, and wise management of both natural and man-made resources. All participants should meet the future needs of the conservation and restoration of natural resources available in the environment, restore the original condition as well as prevent from any form of damage, and maintain the right to control the use of resources is together unify. It has been predicted that around 7 years, within 2013-2020, the fission technology may refer to as: In physics, nuclear fission is a process where a large atomic nucleus in electricity process is important to culture, change emotion and develop into aging society in Thailand. Sharing facts or information and deployment of data to population which serves as Social-Democracy knowledge is very essential as well as communication with the public as a way of selection or open discussion and barter information fully. It shall be a standpoint to prepare the people in Thailand towards global competition.

Research found information regarding obstruction problems from the local community, the refusal of economic need towards the construction and expiation with industrial downstream and upstream to support feedstock, then currently, Thailand has perdition reserved Oil & Gas to subsidize economic demand and supply in 40 years which critically may be lost and will be a real sector, as planned for preparation of strategy in finding sources in Thailand and neighboring countries in ASIA. Native culture developed into modern culture with extraction from the local community then to the people partially done to keep and protect the native culture and develops the traditions and created force intersecting it to be kept for the next generation.

Research has support solution the changes in economic, social, cultural, political and communication aspects. Which affect the social communication also affects the behavior of people, communities and various changes with the economic relationship within the community, which therefore should maintain a harmonious relationship among the members of the community, caring and looking for each other. The collection of knowledge and history of nuclear power plants that can be detectable and will lead to the formation of database must be considered; Phenomenon usually occurs in the adoption of process and these are as follows:

- (a) Replacement - replace and shall not change the original structure, little change, or change in a very long time, that would not affect the life of the new culture too;
- (b) Syncretism is both beliefs blend with behaviors which have differ in systems;
- (c) Increase added new things or ideas in culture which may cause a change or not change the original structure;
- (d) Alteration is due to partial loss of traditional cultural values and the quality is not consistent any longer;
- (e) Initiatives to find new ways to meet the conditions conducive to the changes that will lead to new approaches and initiatives that led to the creation of social and cultural needs;
- (f) The resistance against rise of change that fasten and do not adjust and the lack of opportunities and prestige with their original glory then that person do not accept, ignored, and is against the new one causing to suppress rebellion;
- (g) Deprivation, including the loss of what had been the original owners, a certain person or group which is considered a minority in the society, and a lot of cultural advantages. This group opposed the new culture making them lose social benefits. Acceptance of new culture and borrowed culture acculturation are different stories and may not be related.

6. SUGGESTIONS\RECOMMENDATIONS

- (a) Reflection to social-cultural change of Thailand; Within 2020-2026 (about 7 years), the nuclear power plant project will be connected with the Front End Engineering Design to test the feasibility and make this project a big success then proceed to the step of technology licensor and contractor's contract and be ready for the plant construction.
- (b) Effects to Thai Culture and Society Civilization; in 2026, the nuclear power plant stage to commissioning-operation and the plant will be considered as the first-rise plant in Thailand so it creates a revolution of energy fuel and definitely affects cultural tradition.
- (c) Effects of Advanced Technology Leading to Cultural Development – Social Change in Local Community and Central Government; With regards to suggestions and recommendations mentioned above, the need to have research reports will support divide selection in the way change in value of negative or positive that therefore information matter in part technology philosophy, Cultural science, law Science, Public administrator science and other, therefore it have important that will be support advance and decide to step up social in learning and challenge to Social-Democracy of people's in Thailand and the world's depend on conclusion implement used energy power consumptions and time prior to loss energy power in source on earth plate and pollution in atmospheres upon hand to hand in our generation.

COMPETING INTERESTS

Author has declared that no competing interests exist.

REFERENCE

1. Annual Energy Outlook with Projections to 2040: US. Energy Information Administration Office of Integrated and International Energy Analysis US. Department of Energy Washington, DC. 2013;205(85):8-18.
2. Marie Skłodowska-Curie. Teacher, mentor, research center founder and la Patronne: Darleane C. Hoffman, Nukleonika. 2011;56(3):195–202.
3. Dejsingchai Wongkhumton: The Nuclear Power Plant: The Feasibility Studies and Effect to Socials –Cultural of Power Plant which Construction in Thailand. Research Journal of International Studies. 2011;21:172.
4. National Energy Policy Office. Energy Policy Journal. 1999;43.
5. Asian Development Bank. The Energy Outlook for Asia and the Pacific report: Energy Outlook for Asia and the Pacific 2010-2035; 2013.
6. Dejsingchai Wongkhumton, the Nuclear Power Plant. Research on the effects of social and cultural changes with the construction in Thailand. International Conference of Art and Culture on Creative Economy. 2012;75-80.
7. The Energy Regulatory Commission of Thailand (ERC), Energy Industry Act. 2007;5-13.
8. Government Policy Thailand. Policy statement of the council of ministers. 2011;9-21.
9. Dejsingchai Wongkhumton. The nuclear power plant reflections: The significance of social and cultural effects and different cultural perspectives in Thailand; LAP LAMBERT Academic Publishing. 2012;50-60.

10. The International Center for Research on Women (ICRW). How Technology Can Advance Women Economically. 2010;24-25.
11. Center for Sustainable Development. Cody Fithian and Ashleigh Powell. Cultural Aspects of Sustainable Development. 2011;4-6.
12. Basics of Risk Management for Public Officials. Richard A. 2005;14-16.
13. World Nuclear Association. Asia's Nuclear Energy Growth; 2013.
14. International Status and Prospects of Nuclear Power 2010 Edition. 2010;45-47.
15. Thailand Report. NNAF Alternative Energy Project for Sustainability (AEPS); 2010.
16. Power Development Plan of Thailand, 2008-2021 (PDP 2007: Revision 2),4-7.
17. Thailand 20-Year Energy Efficiency Development Plan (2011 - 2030), Energy Policy & Planning Office, Ministry of Energy, Thailand, 8-13.
18. Department of Alternative Energy Development and Efficiency (DEDE), solar energy map of Thailand. Ministry of Energy, Royal Thai Government; 2010. Available at: <http://www.dede.go.th>
19. Dejsingchai Wongkhumton. Feasibility of feedstock energy to attain Thailand's development on social and cultural structure of life(Lifestyle) affect the energy outlook beyond. 2013;129-137.
20. Nuclear Safety, Security and Safeguards, Thailand Institute of Nuclear Technology. Nuclear Science STKC; 2011.
21. Energy & Environment, Technology Defense in Depth. Safety System for Protection the Nuclear Power Plant. 2011;38(217):43-47.
22. Department of Alternative Energy Development and Efficiency (DEDE). Thailand Energy Statistics; DEDE: Bangkok, Thailand; 2009.
23. National Economic and Social Development Board; KGI Securities (Thailand). 2013;1-2.
24. Thailand's Economic Conditions. Bank of Thailand. 2012;51-65.
25. Electricity Generating Authority of Thailand, Nonthaburi, Thailand, IAEA-CN-164-1P04. 2009;1-4.
26. Status of Nuclear Energy Project in Thailand. Electricity Generating Authority of Thailand; 2012.
27. Administration Thailand in the current globalization. University of the Thai Chamber of Commerce. 2011;3-15.
28. Havlland WA, Prins HEL, Walranth D, McBride B. Cultural anthropology: The human challenge (12th e.d.). CA. Thomson Higher Education; 1970.
29. Levinson D, Ember M. Encyclopedia of cultural anthropology. NY: Henry Holt and Company; 1996.
30. Black well Publishers. Culture in Classical Social Theory, 2001;13-17.
31. Technological Change and the Environment. Handbook of Environmental Economics, Edited by Mäler KG, Vincent© JR. Elsevier Science BV. 2003;1:506.
32. Energy Generating Authority of Thailand (EGAT). Power Development Plan (PDP); 2010. Available at: <http://www.egat.co.th> 2010 English.pdf
33. Energy Policy and Planning Office; Energy Information System Development Division; Ministry of Energy. Royal Thai Government Retrieved; 2011. Available: <http://www.eppo.go.th> (EPP0).
34. Energy Policy and Planning Office: EPP0. Ministry of Energy, Royal Thai Government, Energy Information System Development Division. Nuclear Knowledge Handbook; 2009.
35. EnergyInsights.net. 2009. Peak Oil Production and Reserves; 2012. Available: <http://www.energyinsights.net>

36. Fourcade F, Johnson E, Bara M, Cortey-Dumont P. Optimizing Nuclear Power Plant Refueling with Mixed-integer Programming. *European Journal of Operational Research*; 1997.
37. Guidelines for peer review of long term operation and ageing. *Management of Nuclear Power Plants Vienna*; 2008. Services Series 17.
38. International Atomic Energy Agency (IAEA). *Managing the First Nuclear Power Plant Project*, IAEA Technical Document; 2007.
39. International Atomic Energy Agency. *Safe Long Term Operation of Nuclear Power Plants*, Safety Reports Series No. 57, IAEA, Vienna; 2008.
40. EGAT's Nuclear Power Plants. *A Credit Train Wreck on the Horizon Bangkok Post Op-Ed*; 2009.
41. ASEAN's Nuclear Landscape – Part 1. David Santoro *Issues & Insights*. 2013;13(10):16-18.
42. Summary of Thailand Power Development Plan 2012 – 2030 (PDP2010: REVISION 3). Energy Policy and Planning Office: Ministry of Energy. 2012;1-10.
43. Nuclear Plant Life Cycle Management Implementation Guide. EPRI Report TR-106109; 1998.
44. *The Outlook for Energy. A View to 2040*: Exxonmobil.com; 2012.
45. *Work Management Process Benchmarking Report*. Nuclear Energy Institute (1997). *Perceived Nuclear Risk, Organizational Commitment and Appraisals of Management: A Study of Nuclear Power Plant Personnel*; Risk Analysis; 1995.
46. Ecolo GIC AL. *Chemistry and Engineerings*. Andrzej G. Chmielewski 1, *Dreams or Reality - Fossil Fuels, Renewables or Nuclear Power*. 2010;17(3):257-261.
47. *Project Management. A Managerial Approach*, Seventh Edition, Jack R. Meredith. Samuel j. Mantel Jr. John Wiley & Sons, Ins. All Rights Reserved. 2009;383-400.
48. *The Impact of the Global Financial Crisis on Asia and Asia's Responses Crisis Developments and Long-Term Global Responses*. Insights from Asia and Europe AEEF Conference, Kiel 7 July 2009 by Masahiro Kawai Dean Asian Development Bank Institute, *Aging Nuclear Power Plants: Managing Plant Life and Decommissioning* September; 1993. OTA-E-575.
49. Kevin Mac Donald. Department of Psychology, California State University – Long Beach, Long Beach, CA, USA. *Evolution, Psychology and a Conflict Theory of Culture*. 2009;7(2):208-233.

© 2014 Wongkhamton; This is an Open Access article distributed under the terms of the Creative Commons Attribution License (<http://creativecommons.org/licenses/by/3.0>), which permits unrestricted use, distribution, and reproduction in any medium, provided the original work is properly cited.

Peer-review history:

The peer review history for this paper can be accessed here:
<http://www.sciencedomain.org/review-history.php?iid=490&id=31&aid=4365>