

Clinical Profile of Cutaneous Adverse Drug Reactions in HIV Patients: A Cross-sectional Study

SEETHALAKSHMI GANGA VELLAISAMY¹, MINUSHWETHA MASILAMANI², DIVYASRI THANGAMUTHU³, KANNAN GOPALAN⁴, N KUMARASAMY⁵



ABSTRACT

Introduction: Cutaneous Adverse Drug Reaction (cADR) is one of the most common clinical presentation in patients with Acquired Immunodeficiency Syndrome (AIDS). These patients are more prone to get cADR because of various factors like altered drug metabolism, immune dysregulation, genetic predisposition, polypharmacy and oxidative stress. So, a methodical study of cADR, including the risk factors, patterns of drug eruption and prognostic factors is of crucial clinical significance.

Aim: To determine the prevalence of cutaneous drug reactions in Human Immunodeficiency Virus (HIV) patients and also study the various patterns of cADRs.

Materials and Methods: This cross-sectional study was conducted at the outpatient department of Infectious diseases and Medical Centre, Voluntary health services, Chennai, Tamil Nadu, India, from April 2020 to December 2020. A total of 150 HIV patients above 18 years who were taking Anti-retroviral Therapy (ART) were included in this study. After screening for cADR, it was classified as Morbilliform eruption, Erythema

multiforme, Stevens Johnson Syndrome (SJS), Toxic Epidermal Necrolysis (TEN) and Fixed Drug Eruption (FDE) etc., The severity of the reaction was graded based on Modified Hartwig and Siegel severity assessment scale. Pearson Chi-square test and Bivariate Pearson Correlation was performed to statistically analyse the data.

Results: Amongst total of 150 HIV patients (87 males and 63 females), mean age of the study population was 41.07 years. There was a male predominance with male:female ratio of 1.3:1. About 44% (n=6) of the study population had opportunistic infection. The prevalence of drug eruption in this study was found to be 6% (n=9). Out of which, 55.6% (n=5) of the population had morbilliform eruption and 22.7% had urticarial (n=2) and pruritus (n=2) respectively. About 56% (n=5) of the drug reaction was caused by Tenofovir/Lamivudine/Efavirenz regimen and the remaining 44% (n=4) of the drug eruption was caused by Abacavir/Lamivudine/Dolutegravir regimen.

Conclusion: In this study, the prevalence of drug eruption was 6% and majority of the population had morbilliform eruption.

Keywords: Human immunodeficiency virus, Immune response, Oxidative stress, Skin reaction

INTRODUCTION

In 1987, Zidovudine (AZT), the first antiretroviral drug was available to AIDS patients [1]. Since, 2004, a stable and effective combination therapy, Highly Active Antiretroviral Therapy (HAART), has been available free of cost in India [1]. With the increasing application of HAART throughout the world, the quality of such patient's lives has been improved, the survival time is prolonged, and the lives of numerous AIDS patients have been saved [1]. However, HAART regimens cannot purge the HIV-1 virus in patients and completely cure AIDS, and side-effects occur with clinical therapies, which in turn may lead to the patient's termination of treatment and sometimes even death [1]. Although HAART reduces the occurrence of mucocutaneous disorders in HIV-1-infected patients [2,3], the treatment regimen itself may be the cause of a common side-effect, the drug eruption [4].

AIDS patients, due to the immunosuppression experiences variety of opportunistic infections and tumors which makes them to expose to several types of antibiotics, antifungal drugs, antivirals, and even antitumor drugs thereby increasing the chances of drug eruption [5,6]. cADR is one of the most common clinical presentation in patients with HIV/AIDS. They are more prone to get cADR because of various factors like altered drug metabolism, immune dysregulation, genetic predisposition, polypharmacy and oxidative stress [5].

These drug eruptions may reduce patient's quality of life and adversely affect treatment adherence finally leading to treatment failure. However, the risk factors of cADR in AIDS patients are not well understood. So, a systematic study of cADR, including predisposing factors, patterns of drug eruption and drug

eruption-related factors influencing prognosis, is of crucial clinical significance. Studies in the literature, regarding cADR with the newer ART regimens are lacking. This study is in the direction to throw light on cADR associated with newer ART regimens. With this aim, present study was conducted to determine the prevalence of cutaneous drug reactions in HIV patients and to study the various patterns of drug reactions.

MATERIALS AND METHODS

This cross-sectional study was conducted in outpatient department of Infectious diseases and Medical Centre, Voluntary health services, Chennai, Tamil Nadu, India, from April 2020 to December 2020. Study was commenced after getting approval from Institutional Ethical Committee (VMKVMC&H/IEC/19/08).

Inclusion criteria: All the consecutive HIV patients, aged more than 18 years, who were started on ART during the study period were included.

Exclusion criteria: Those patients who were not willing to participate in the study and refused to provide consent were excluded.

Procedure

Total of 150 HIV patients were included sufficing the inclusion and exclusion criteria. After obtaining informed consent from all participants, baseline information regarding demographic features (age, sex), duration of illness and symptoms, previous history of any drug eruption, drugs taken and complications any were recorded in a pre-tested structured proforma. Previous history of cutaneous reactions was confirmed by medical records. The most recent

CD4+counts of each patient were recorded from the patient's medical records.

Each patient was then subjected to a complete dermatological examination including skin, hair, nail and mucosa in adequate day light. The diagnosis of the pattern of drug eruption was made based on clinical features. After screening for cADR, it was classified under any of the following categories for the purpose of analysis: 1) Morbilliform eruption; 2) Erythema multiforme; 3) SJS; 4) TEN; 5) FDE; 6) Urticaria; 7) Pruritus; 8) Vasculitis; 9) Erythroderma; 10) Photodermatoses; 11) Diffuse cutaneous pigmentation; and 12) Drug hypersensitivity syndrome.

The severity of the reaction was graded based on Modified Hartwig and Siegel severity assessment scale [7]. The modified Hartwig and Siegel scale grades the severity of drug eruption into mild, moderate or severe with various levels depending upon the factors like requirement for change in therapy, duration of stay in hospital, and the disability produced by such drug eruption. As per the scale, the level of severity of cADRs was classified as levels 1-7:

- Levels 1 and 2 indicate mild,
- Levels 3, 4a, and b moderate,
- Levels 5, 6, and 7 severe grade [7]. The association between the prevalence of eruption and effects of gender, education, occupation and history of allergy was investigated. The findings were recorded in a proforma for analysis and interpretation of data.

STATISTICAL ANALYSIS

Data was entered using International Business Management (IBM) Statistical Package for Social Sciences (SPSS) version 23.0. Pearson chi-square test was used to find an association between the prevalence of eruption in HIV positive patients and ART regimens. Their association significance was determined at $p < 0.05$. The analytical relation was established between CD4 count and prevalence of eruption.

RESULTS

In this study, out of total 150 HIV patients, 87 (58%) patients were males and 63 (42%) were females and there was a male preponderance and the male to female ratio is 1.3:1. Majority of the study subjects were in the age group of 40-60 years, with a mean age of 41.07 ± 5 years. Most of them have completed high school, majority were unemployed and resided in urban area. In this study, majority of the patients 129 (86%) acquired the infection through sexual mode followed by 14 (9.3%) patients who acquired the infection through needles and 7 (4.7%) of patients through blood transfusion. Out of the 150 patients, 6 (4%) had past history of allergy to drugs. The World Health Organisation (WHO) clinical staging of the study population showed that majority of them were in Stage-1, followed by Stage-3, Stage-2 and Stage-4. Most of the patients 78 (52%) had CD4 count between 200-500 and 26 (17%) had count below 200. Among the study population, 66 (44%) had a past history of opportunistic infections which included Pulmonary Tuberculosis (TB) in 16 (23.9%) and oral candidiasis in 16 (23.9%) followed by a combination of Pulmonary TB and Oral Candidiasis in 3 (4.5%), Herpes simplex infection in 10 (15%), Herpes zoster in 7 (11%), pneumocystis pneumonia in 5 (7.6%), cryptococcal meningitis in 4 (6%) patients, Extrapulmonary TB in 3 (4.5%) and cerebral toxoplasmosis in 2 (3%) patients [Table/Fig-1].

All the study subjects were on ART. Most of the patients 66 (44%) were on TDF (Tenofovir)+3TC (Lamivudine)+DTG (Dolutegravir) regimen followed by 59 (39.3%) patients who were on TDF+3TC+EFV (Efavirenz) regimen. There were 14 types of ART regimens in this study. Statistical analysis depicted that there was no association between ART regimens and prevalence of eruption [Table/Fig-2].

S. No.	Parameter	Variables	N=150
1	Age (years)	18-39	68 (45.3)
		40-59	78 (52)
		>60	4 (2.7)
2	Sex	Male	87 (58)
		Female	63 (42)
3	Education	Completed high school	82 (54.6)
		Middle school	5 (3.3)
		Primary school	48 (32)
		Illiterate	15 (10)
4	Occupation	Semi-skilled worker	7 (4.7)
		Skilled worker	45 (30)
		Unemployed	57 (38)
		Unskilled worker	41 (27.3)
5	Residence	Rural	67 (44.7)
		Urban	83 (55.3)
6	Marital status	Married	102 (68)
		Separated	10 (6.7)
		Unmarried	25 (16.7)
		Widow	13 (8.7)
7	Mode of transmission	Blood transfusion	7 (4.7)
		Sexual mode	129 (86)
		Through needles	14 (9.3)
8	History of drug allergy	Yes	6 (4)
		No	144 (96)
9	WHO staging	Stage-I	60 (40)
		Stage-II	29 (19.3)
		Stage-III	38 (25.3)
		Stage-IV	23 (15.3)
10	CD4 count	0-200	26 (17.3)
		200-500	78 (52)
		>500	46 (30.7)
11	Opportunistic infection	Yes	66 (44)
		No	84 (56)

[Table/Fig-1]: Demographic profile of the study population.

WHO: World health organisation

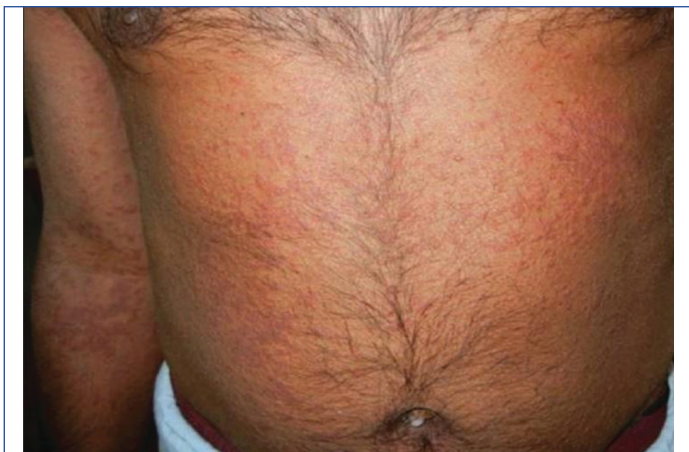
ART Regimen	Frequency	Percentage	Prevalence of drug eruption n (%)	p-value
3TC+TDF+EFV	59	39.3	5 (56%) (Morbilliform eruption)	0.998
ABC+3TC+DTG	2	1.3	4 (44%) (pruritus and urticaria)	0.232
ABC+3TC+EFV	2	1.3	0	-
ATZ+3TC+EFV	1	0.7	0	-
TDF+3TC+DRV/r+DTG	1	0.7	0	-
ABC+3TC+RAL	1	0.7	0	-
TAF+FTC+DTG	2	1.3	0	-
ATV/r+DTG	1	0.7	0	-
TDF+3TC+ATZ/r	1	0.7	0	-
TDF+3TC+DTG	66	44.0	0	-
TDF+3TC+RPV	4	2.7	0	-
TDF+FTC+DTG	5	3.3	0	-
TDF+FTC+EFV	3	2.0	0	-
TDF+FTC+RTV+DRV	1	0.7	0	-
TDF+3TC+LPV+RTV	1	0.7	0	-
Total	150	100.0	9 (100%)	-

[Table/Fig-2]: Various Anti-retroviral Therapy (ART) regimens among the study population and the prevalence of drug eruption.

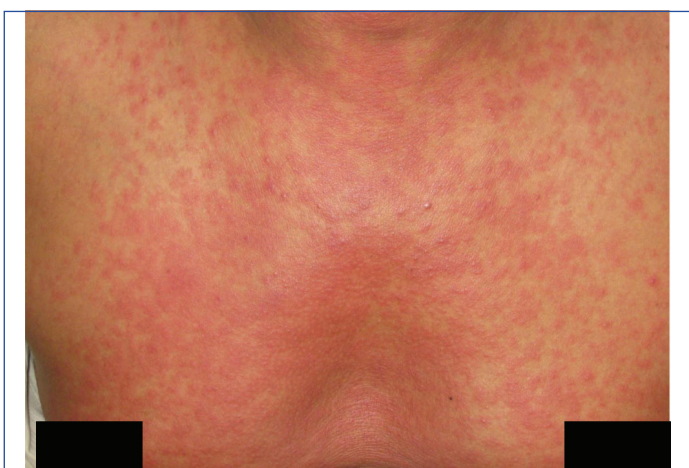
Chi-square test

TDF: Tenofovir disoproxil fumarate; 3TC-Lamivudine; EFV: Efavirenz; ABC: Abacavir; DTG: Dolutegravir; DRV/r: Darunavir/ritonavir; RAL: Raltegravir; TAF: Tenofovir alafenamide; ATV/r: Atazanavir/Ritonavir; RPV: Rilpivirine; FTC: Emtricitabine; RTV: Ritonavir; LPV: Lopinavir

Only 2 (1.3%) patients presented with nail abnormality and both had koilonychia. About 12 (8%) of the patients had systemic involvement out of which six (50%) patients experienced giddiness, three (25%) had fever, two (16%) had hepatitis and only one (8%) of patients had nausea/vomiting. The prevalence of drug eruption in this study was 6%. A total of nine patients had drug eruption out of which, five (55.6%) patients had morbilliform eruption [Table/Fig-3-5], two (22.7%) had urticaria [Table/Fig-6,7] and two (22.7%) had intractable pruritus.



[Table/Fig-3]: Morbilliform eruption on abdomen and forearms of a male patient.



[Table/Fig-4]: Morbilliform eruption on neck and chest region of female patient.



[Table/Fig-5]: Morbilliform eruption on back region of male patient.

Out of the nine patients who had drug eruption, five (55.6%) patients were on TDF+3TC+EFV regimen and four (44.4%) patients were on ABC+3TC+DTG. All the five patients who were on TDF+3TC+EFV regimen had morbilliform eruption. Urticaria and pruritus developed on patients who were on ABC+3TC+DTG regimen.

In present study, there was a significant association between prevalence of eruption and gender as well as past history of allergy



[Table/Fig-6]: Urticaria on back region of female patient.



[Table/Fig-7]: Urticaria on forearm region of female patient.

[Table/Fig-8]. However, the association between prevalence of eruption and age, education, occupation, marital status, residence, mode of transmission, opportunistic infections as well as WHO staging were not significant ($p>0.05$).

All various types of cADR in this study were seen in patients with CD4 count less than 200 cells [Table/Fig-9]. A bivariate correlation was used to find the relation between CD4 count and prevalence of drug eruption. The result of analysis showed that there was no significant linear relationship between CD4 count and prevalence of eruption [Table/Fig-10].

		Prevalence of Eruption		p-value
		Yes (n=9)	No (n=141)	
Sex	Female	8	55	0.004
	Male	1	86	
Total		9	141	

[Table/Fig-8]: Association between sex and prevalence of drug eruption. Chi-square test

		Prevalence of eruption		p-value
		Yes	No	
CD4 count	<200	9	17	0.356
	200-500	0	78	
	>500	0	46	
Total		9	141	

[Table/Fig-9]: Association between CD4 count and prevalence of drug eruption. N=150 patients; Chi-square test was used to calculate the p-value

DISCUSSION

The HIV infected persons have to take ART lifelong [5]. The use of ART has been associated with short term and long term adverse effects [8]

Parameters		CD4 count
CD4	Pearson Correlation	1
	Sig. (2-tailed)	0.356
Prevalence of eruption	Pearson Correlation	-.076
	Sig. (2-tailed)	0.356

[Table/Fig-10]: Bivariate correlation between CD4 count and cADR.
Total N=150 patients

despite their beneficial effects. These toxicities may reduce patient's quality of life and adversely affect treatment adherence [9-11] and consequently may lead to treatment failure [8]. The management of cADRs to ART with suspected drug discontinuation, dose adjustment or switching to the other ART and supportive treatments are frequent methods that increase the tolerability of ART [6].

Continuous intensive monitoring of cADRs in HIV infected patients who are on ART helps in individualising the pattern of cADRs and helps clinicians to select an ART regimen that is not only effective in achieving, maintaining viral suppression, and improving immune function but also safe in overall HIV management. The rapid detection and treatment of cADR, plus the identification of the causative agents, are essential for preventing a progression of the reaction [12].

In this study, there was a male predominance which was similar to the studies done by Rajesh R et al., Li YY et al., Kumarasamy N et al., Singh H et al., Alexoudi I et al., and Coopman SA et al., [12-17]. In contrast the studies done by Agu KA et al., and Kouotou EA et al., showed a female predominance [11,18]. Regarding the age, most of the study population in this study belonged to 40-59 years which is similar to the study done by Rajesh R et al., [12]. In studies done by Agu KA et al., Li YY et al., Kumarasamy N et al., Kouotou EA et al., the most common age group was 30-44 years [11,13,14,18]. In study done by Singh H et al., the age group was 25-35 years [15].

In this study, females showed a higher prevalence of drug eruption compared to males. This finding is similar to the studies done by Agu KA et al., Singh H et al., Kouotou EA et al., Maharani PN et al., Modayil RR et al., and Mehta U et al., which showed a female predominance [11,15,18-21]; but contrast to the studies done by Rajesh R et al., Li YY et al., and Alexoudi I et al., which showed a male predominance [12,13,16]. The relation between cADR and sex was assumed to be influenced by several factors such as body fat percentage, hormonal factor, and enzyme activities [22].

Most of the study subjects in this study acquired the infection through sexual mode of transmission (86%), which was similar to the other studies done in South India [14,23]. The prevalence of drug eruption in this study was found to be 6%. This was comparable to a study done by Li YY et al., [13]. The prevalence was lower in studies done by Kouotou EA et al., Salami TA et al., [18,24], and higher in various other previous comparable studies [Table/Fig-11] [11-15,18,19,23,24]. The lesser prevalence of cADR in the present study, may be due to the usage of Tenofovir based regimen and more recent ART regimens including integrase inhibitors with better tolerability, enhanced virological efficacy and an overall safer profile. The higher prevalence in other studies may be due to the ART regimens, genetic and geographic factors and more sample size.

The most common pattern of drug eruption was morbilliform eruption in this study followed by urticaria which was similar to other previous studies [Table/Fig-12] [12,16-19]. Among the various individualised drug eruptions, benign forms of eruption were seen in all the patients in this study. These results are close to that from other studies [19,25,26]. Severe forms of eruption were not seen in this study as we didn't use Nevirapine based regimens.

It was difficult to identify a single drug responsible for drug eruptions since the patients were taking multiple drugs. The ART molecules most likely to induce drug eruptions in the present study were

Researcher	Study population	Year	Sample size	Prevalence
Kouotou EA et al., [18]	Yaounde, Cameroon	2010-2014	6829	0.6%
Salami TA et al., [24]	Nigeria	2001-2005	900	2.8%
Li YY et al., [13]	Yunnan, China	2011-2013	1817	7.4%
Agu KA et al., [11]	Nigeria	2011 (Jan-Dec)	1237	11.4%
Kumarasamy N et al., [14]	South India	1996-2006	3154	15.2%
Kumarasamy N and associates [23]	South India	2000-2003	333	14%
Rajesh R et al., [12]	Manipal, South India	2009-2012	450	16.5%
Singh H et al., [15]	Chattisgarh, India	2006-2008	79	15.8%
Maharani PN et al., [19]	Indonesia	2014-2018	557	16.9%
Present study	Chennai, South India	2020	150	6%

[Table/Fig-11]: Overall prevalence of cutaneous drug eruption in HIV positive patients from previous comparable studies with present study [11-15,18,19,23,24, present study].

Researcher	Study Population	Year	Sample Size	Patterns
Present study	Chennai, South India	2019-2020	150	Morbilliform eruption-55.5% Urticaria-22.2% Pruritus-22.2%
Rajesh R et al., [12]	Manipal, South India	2009-2012	450	Morbilliform eruption-5.4%
Coopman SA et al., [17]	Boston, United States	1988-1991	684	Morbilliform eruption-7.4% Urticaria-17%
Alexoudi I et al., [16]	Athens, Greece	1988-2003	1324	Morbilliform eruption-40% Urticaria-5.6%
Kouotou EA et al., [18]	Yaounde, Cameroon	2010-2014	6829	Morbilliform eruption-36.6% Fixed pigmented erythema-7.3% Acute urticaria-4.9% Erythema multiforme-4.9% TEN-1% DRESS-1%
Maharani PN et al., [19]	Indonesia	2014-2018	557	Morbilliform eruption-85.6% SJS-8.9% Urticaria-4.4% Erythroderma-1.1%

[Table/Fig-12]: Comparison of various patterns of drug eruption with similar studies done elsewhere [12,16-19, present study].

DRESS: Drug reaction with eosinophilia and systemic symptoms

Efavirenz and Abacavir. The percentage of drug eruptions due to Efavirenz was 55.5% in this study. It was very different compared to another study [27]. This was explained by the greater number of patients on Efavirenz containing regimen in this study.

In the literature, several authors recommend continuation of treatment in more than 50% of the patients when it is a benign drug eruption [25]. The same regimen was continued in this study due to the mild form of eruption. In all the patients with drug eruption, the lesions resolved without any modification in the drug regimen. In this study, the patients who had past history of drug allergy were more likely to develop drug eruptions. This was similar to a study done by Li YY et al., [13]. So, before treating patients with new medications, the treating physician should enquire about the history of drug allergy and avoid using the medications or structural analogues of those medicines that cause allergy.

Limitation(s)

The limitations of this study include a lesser sample size which consisted only of adults more than 18 years on ART. In addition, the study was done at a single centre which makes it difficult to generalise the findings to other population.

CONCLUSION(S)

In this study, the prevalence of drug eruption was found to be 6%. A high number of cases were found in males with low CD4 count. The most common pattern of cADR was morbilliform eruption. The most common drugs implicated in causing this eruption were Efavirenz and Abacavir. ADRs are much more commoner in HIV patients than the general population. These toxicities may lead to reduced quality of life, affect treatment adherence and ultimately lead to treatment failure. Patient compliance can be improved with proper education and counselling regarding the disease process and inadvertent side-effects due to ART. The constant improvement and introduction of new drugs in clinical practice will still require careful monitoring for skin reactions and to elucidate the various risk factors for drug eruption occurrence in HIV patients.

REFERENCES

- [1] Joint United Nations Programme on HIV/AIDS (UNAIDS). World AIDS Day 2014 Report-Fact Sheet. Recuperado de http://www.unaids.org/sites/default/files/documents/20141118_FS_WADReport_en.pdf
- [2] Kandel CE, Walmsley SL. Dolutegravir-a review of the pharmacology, efficacy, and safety in the treatment of HIV. *Drug Des Devel Ther.* 2015;9:3547-555. Doi: 10.2147/DDDT.S84850. eCollection 2015.
- [3] Srikanth BA, Babu SC, Yadav HN, Jain SK. Incidence of adverse drug reactions in human immune deficiency virus-positive patients using highly active antiretroviral therapy. *J Adv Pharm Technol & Res.* 2012;3(1):62.
- [4] Mocroft A, Ledergerber B, Katlama C, Kirk O, Reiss PD, Monforte AD, et al. Decline in the AIDS and death rates in the EuroSIDA study: an observational study. *The Lancet.* 2003;362(9377):22-29.
- [5] Richman DD, Margolis DM, Delaney M, Greene WC, Hazuda D, Pomerantz RJ. The challenge of finding a cure for HIV infection. *Science.* 2009;323(5919):1304-07.
- [6] Calmy A, Hirschel B, Cooper DA, Carr A. A new era of antiretroviral drug toxicity. *Antivir Ther.* 2009;14(2):165-79.
- [7] Hartwig SC, Siegel J, Schneider PJ. Preventability and severity assessment in reporting adverse drug reactions. *Am J Hosp Pharm.* 1992;49(9):2229-32.
- [8] Agu KA, Oparah AC. Adverse drug reactions to antiretroviral therapy: Results from spontaneous reporting system in Nigeria. *Perspect Clin Res.* 2013;4(2):117.
- [9] Ammassari A, Murri R, Pezzotti P, Trotta MP, Ravasio L, De Longis P, et al. Self reported symptoms and medication side-effects influence adherence to highly active antiretroviral therapy in persons with HIV infection. *J Acquir Immune Defic Syndr.* 2001;28(5):445-49.
- [10] Fogarty L, Roter D, Larson S, Burke J, Gillespie J, Levy R. Patient adherence to HIV medication regimens: a review of published and abstract reports. *Patient Educ Couns.* 2002;46(2):93-108.
- [11] Agu KA, Okojie O, Oqua D, King RC, Omonaiye O, Onuoha C, et al., Medication Adherence and Risk factors for non-adherence among patients taking Highly Active Antiretroviral Therapy. *West African J Pharm.* 2011;22(1):19-26.
- [12] Rajesh R, Vidyasagar S, Varma DM, Guddattu V, Patel NR, Varghese M, et al. Evaluating the effects of combination antiretroviral therapy regimens and the development of adverse drug reactions in Indian human immunodeficiency virus positive patients. *Saudi J Health Sci.* 2014;3(2):107-17.
- [13] Li YY, Jin YM, He LP, Bai JS, Liu J, Yu M, et al. Clinical analysis of HIV/AIDS patients with drug eruption in Yunnan, China. *Sci Rep.* 2016;6(1):01-07.
- [14] Kumarasamy N, Venkatesh KK, Cecelia AJ, Devaleenal B, Lai AR, Saghayam S, et al. Spectrum of adverse events after generic HAART in southern Indian HIV-infected patients. *AIDS Patient Care and STDs* 2008;22(4):337-44.
- [15] Singh H, Dulhani N, Tiwari P, Singh P, Sinha T. A prospective, observational cohort study to elicit adverse effects of antiretroviral agents in a remote resource-restricted tribal population of Chhattisgarh. *Indian J Pharmacol.* 2009;41(5):224.
- [16] Alexoudi I, Katsarou A, Papanizos V, Oikonomou K, Kourkounti S, Augerinou G, et al. Dermatological conditions associated with HIV medication in a cohort of Greek patients initiating antiretroviral therapy: 1988-2013. *J Virus Erad.* 2018;4(1):26.
- [17] Coopman SA, Johnson RA, Platt R, Stern RS. Cutaneous disease and drug reactions in HIV infection. *N Engl J Med.* 1993;328(23):1670-74.
- [18] Kouotou EA, Nansseu JR, Ngono VN, Tatah SA, Zoung-Kanyi Bissek AC, Ndjitoyap Ndam EC. Prevalence and clinical profile of drug eruptions among antiretroviral therapy-exposed HIV infected people in Yaoundé, Cameroon. *Dermatol Res Pract.* 2017;2017:6216193. Doi: 10.1155/2017/6216193. Epub 2017 Jun 28.
- [19] Maharani PN, Suwarsa O, Prodjosoewojo S. Clinical profile of adverse cutaneous drug reactions in patients with human immunodeficiency virus. *AMJ.* 2020;7(4):200-05
- [20] Modayil RR, Harugeri A, Parthasarathi G, Ramesh M, Prasad R, Naik V, et al. Adverse drug reactions to antiretroviral therapy (ART): an experience of spontaneous reporting and intensive monitoring from ART centre in India. *PDS.* 2010;19(3):247-55.
- [21] Mehta U, Durrheim DN, Blockman M, Kredt T, Gounden R, Barnes KI. Adverse drug reactions in adult medical inpatients in a South African hospital serving a community with a high HIV/AIDS prevalence: prospective observational study. *Br J Clin Pharmacol.* 2008;65(3):396-406.
- [22] Armeinesya S, Rowawi R, Hamda ME. Manifestations of allergic drug eruption to antiretroviral in HIV/AIDS patients at Teratai Clinic Dr. Hasan Sadikin General Hospital. *JSK.* 2018;4(1):24-28.
- [23] Kumarasamy N, Venkatesh KK, Devaleenal B, Poongulali S, Mothi SN, Solomon S. Safety, tolerability and effectiveness of generic HAART in HIV-infected children in South India. *J Trop Pediatr.* 2009;55(3):155-59.
- [24] Salami TA, Asalu AF, Samuel SO. Prevalence of cutaneous drug eruptions in adult Nigerians with HIV/AIDS. *Niger Postgrad Med J.* 2010;17(2):160.
- [25] Bocquet H, Chosidow O. Les toxidermies au cours du SIDA. *Revue française d'allergologie et d'immunologie Clinique.* 1997;37(5):678-84.
- [26] Amoussou K, Houzou P, Tchangai-Walla K, Agbeta A, Pitche P. Prise en charge des toxidermies induites par les antirétroviraux chez les patients infectés par le VIH. *Médecine d'Afrique noire.* 2010;57(11):527-34.
- [27] Ananworanich J, Moor Z, Siangphoe U, Chan J, Cardiello P, Duncombe C, et al. Incidence and risk factors for rash in Thai patients randomized to regimens with nevirapine, efavirenz or both drugs. *AIDS.* 2005;19(2):185-92.

PARTICULARS OF CONTRIBUTORS:

1. Professor, Department of Skin and STD, Vinayaka Mission's Kirupananda Variyar Medical College and Hospital, Vinayaka Mission's Research Foundation (Deemed to be University), Salem, Tamil Nadu, India.
2. Postgraduate Student, Department of Skin and STD, Vinayaka Mission's Kirupananda Variyar Medical College and Hospital, Vinayaka Mission's Research Foundation (Deemed to be University), Salem, Tamil Nadu, India.
3. Postgraduate Student, Department of Skin and STD, Vinayaka Mission's Kirupananda Variyar Medical College and Hospital, Vinayaka Mission's Research Foundation (Deemed to be University), Salem, Tamil Nadu, India.
4. Professor, Department of Skin and STD, Vinayaka Mission's Kirupananda Variyar Medical College and Hospital, Vinayaka Mission's Research Foundation (Deemed to be University), Salem, Tamil Nadu, India.
5. Chief and Director, Department of Skin and STD, VHS-Infectious Diseases Medical Centre Director/Site Leader-Chennai Antiviral Research and Treatment, Chennai, Tamil Nadu, India.

NAME, ADDRESS, E-MAIL ID OF THE CORRESPONDING AUTHOR:

Seethalakshmi Gangavellaisamy,
No. 11, Mullai Nagar, Seelan Aickenpatty, Salem-636005, Tamil Nadu, India.
E-mail: dr.seethalakshmiyadav@gmail.com

AUTHOR DECLARATION:

- Financial or Other Competing Interests: None
- Was Ethics Committee Approval obtained for this study? Yes
- Was informed consent obtained from the subjects involved in the study? Yes
- For any images presented appropriate consent has been obtained from the subjects. Yes

PLAGIARISM CHECKING METHODS: [Jain H et al.]

- Plagiarism X-checker: Nov 15, 2022
- Manual Googling: Feb 16, 2023
- iThenticate Software: Mar 29, 2023 (11%)

ETYMOLOGY: Author Origin

Date of Submission: **Nov 03, 2022**
Date of Peer Review: **Dec 24, 2022**
Date of Acceptance: **Apr 03, 2023**
Date of Publishing: **May 01, 2023**